



tullnau

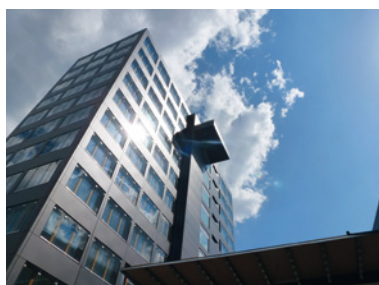
Tagungspark

How to find us

tullnau Tagungspark

Am Tullnaupark 2
90402 Nürnberg

Tel.: 0911 2370-1010
tagung@tullnau.de
www.tullnau.de



By public transport:.

From airport by metro line 2 (direction Röthenbach) to Main Railway Station

From Main Railway Station by tram lines 5 and 11 (direction Tiergarten) to „Tullnaupark“ station (stops directly in front of the building of the VR bank)

Alternatively by city train line 2 or 3 (direction Lauf/Hartmannshof (train line 2) or Altdorf (train line 3)) to „Dürrenhof“ station (5 minutes walk to Bahnhofstraße via Kressengartenstraße to Tullnaustraße)

From the city center:

From Main Railway Station in the direction of Nürnberg-Mögeldorf and Tiergarten, across Bahnhofstraße, turn left into Dürrenhofstraße, turn right at the next traffic light into Kressengartenstraße and head to Tullnaustraße.



tullnau

Tagungspark

From the highway:

via A3: A3 to Nürnberg-Mögeldorf, Laufamholz- and Ostendstraße

via A6: A6 change to A73 in direction of Fürth/Nürnberg to Nürnberg-Zollhaus, then B8/Müncher Straße

via A9: to Nürnberg Fischbach, B4/Regensburger Straße

Parking:

- Public car park at Wöhrder See across the street (charges apply)
- Adjacent parking garage (parking on marked areas of the VR Bank) with free tickets, which can be picked up in front of the entrance at the reception (Exiting without tickets possible)

Access:

- The Atrium is freely accessible during the opening hours of the VR bank
Monday, Tuesday and Thursday from 9 am to 5 pm, Wednesday and Friday from 9 am to 1 pm
- For events outside the opening hours the reception is usually occupied 30 minutes before the beginning of the event. Different admission times only by agreement.